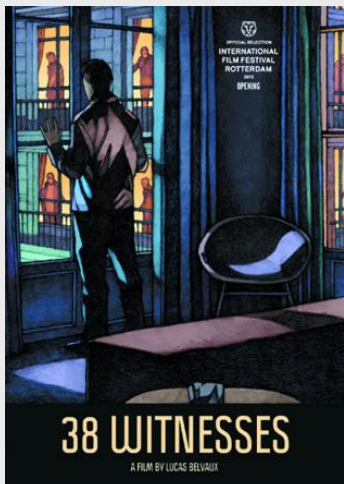


38 WITNESSES

based on the novel "Est-ce ainsi que les femmes meurent?" by Didier Decoin (© Editions Grasset & Fasquelle)

ARTEMIS
PRODUCTIONS



104 min – Couleur – 2,39 (Scope DCP) – 5.1 - DCP

Français

Released in France: 14/03/2012

Released in Belgique: 14/03/2012



LUCAS BELVAUX

Parfois trop d'amour LM (1992)

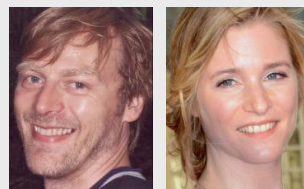
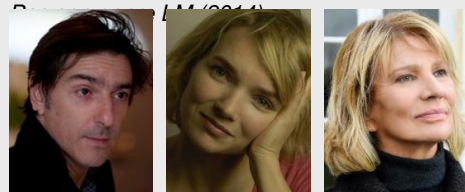
Pour rire! LM (1996)

Trilogie: Un couple épatant - Cavale - Après la vie LM (2001)

La raison du plus faible LM (2005)

Rapt LM (2009)

Le Capitaine Léonard LM (2011)



Synopsis

When a Louise Morvand returns from a business trip to China she discovers that a crime has been committed in her hometown. A woman has been murdered in the very street where Louise lives. The business woman is upset and makes sure the local police investigates this case diligently although some citizens seem to be strangely uninterested in finding the murderer.

Casting

<i>Pierre Morvand</i>	Yvan Attal
<i>Louise Morvand</i>	Sophie Quinton
<i>Sylvie Lorient</i>	Nicole Garcia
<i>Le capitaine Léonard</i>	François Feroleto
<i>Anne</i>	Nathacha Régnier
<i>Petrini</i>	Patrick Descamps

Equipe

<i>Director of photography</i>	Pierric Gantelmi D'Ille
<i>Production designer</i>	Frédérique Belvaux
<i>Sound recordist</i>	Henri Morelle
<i>Costume designer</i>	Nathalie Raoul
<i>Picture editor</i>	Ludo Troch
<i>Sound mixer</i>	Luc Thomas
<i>Sound editor</i>	Béatrice Wick
<i>Composer</i>	Arne Van Dongen

Partenaires

Eurimages, Centre du Cinéma et de l'Audiovisuel de la Fédération Wallonie-Bruxelles, Voo, Taxshelter.be, Casa Kafka Pictures, Casa Kafka Pictures Movie Tax Shelter Empowered by Belfius, Dexia, La Région Haute-Normandie, Procirep, Angoa, Cinémage 6, Soficinéma 7, Cinémage 5, Canal +, France Télévisions, Ciné +

Productions (co)Déléguées

Agat Films & Cie

Coproductions

Artémis Productions
Films Sous Influence
France 3 Cinéma
Hérodiade
RTBF (Télévision belge)
Belgacom

Ventes internationales

Films Distribution

Distribution

France: Diaphana Distribution
Belgique: Cinéart