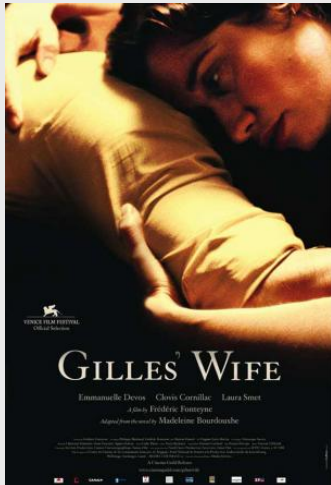


# GILLE'S WIFE

based on the novel « La Femme de Gilles » by Madeleine Bourdouxhe (Ed. Gallimard / Ed. Labor)



**Drama**

103 min – Couleur – 1,85 (Flat) – Dolby SRD

**Français**

Released in Belgium: 29/09/2004

Released in France: 15/09/2004



**FRÉDÉRIC FONTEYNE**

*Bob le déplorable CM (1995)*

*Max & Bobo LM (1998)*

*Une liaison pornographique LM (1999)*

*Tango Libre LM (2012)*

## Synopsis

It's the 1930s, in a working class milieu. It's the story of Elisa. Elisa is married to Gilles who works in a foundry. Sometimes he's on the night shift, sometimes he's on the day shift. The foundry never stops. Elisa looks after their children and the house and spends each day waiting for Gilles to return. Her sister, Victorine, has just started working in a store in town and often stops by to see her sister to give her a helping hand and to play with the children. Elisa is expecting another baby. Crazy ideas start crossing her mind. Gilles and Victorine, Victorine and Gilles.....

## Casting

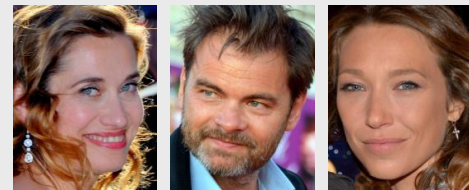
<i>Elisa</i>	Emmanuelle Devos
<i>Gilles</i>	Clovis Cornillac
<i>Victorine</i>	Laura Smet

## Equipe

<i>Director of photography</i>	Virginie Saint Martin
<i>Composer</i>	Vincent d'Hondt
<i>Picture editor</i>	Ewin Ryckaert
<i>Production designer</i>	Véronique Sacrez
<i>Costume designer</i>	Anne Fournier
<i>Sound editor</i>	Etienne Curchod
<i>Sound mixer</i>	Franco Piscopo

## Partenaires

Canal +, France 3 Cinéma, SF DRS, Media Services, Fonds national de soutien à la production audiovisuelle du Grand-Duché de Luxembourg, Centre du Cinéma et de l'Audiovisuel de la Fédération Wallonie-Bruxelles, Wallimage (Wallonie), Eurimages



## Productions (co)Déléguées

Artémis Productions  
Liaison Cinématographique  
Samsa Film

## Coproductions

Nord-Ouest Films  
Eyescreen  
Fama Film  
RTBF (Télévision belge)

## Ventes internationales

Wild Bunch

## Distribution

Belgique: Cinéart  
France: Mars Distribution