

CALL ME ELISABETH

d'après le livre de Anne Wiazemsky



Drama

90 min – Couleur – 1,85 (Flat) – Dolby SRD

Français

Released in France: 26/10/2006



JEAN-PIERRE AMÉRIS

Synopsis

Betty is ten years old. She's scared of ghosts and dark nooks and crannies. When her sister Agnès, who's a year older than Betty, goes to boarding school, Betty finds herself alone with her parents, Régis and Mado, who are going through a break-up, and Rose, a governess who's virtually mute. It's then that Yvon clammers over the high wall separating the family garden from the psychiatric clinic that her father oversees. Moved by his fragility, Betty hides Yvon for several days in the bike shed. She confides everything weighing on her heart to him, determined that he'll become her...

Casting

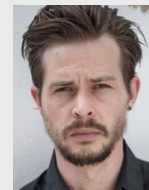
<i>Betty</i>	Alba Gaïa Kraghede Bellugi
<i>Régis</i>	Stéphane Freiss
<i>Rose</i>	Yolande Moreau
<i>Mado</i>	Maria de Medeiros
<i>Yvon</i>	Benjamin Ramon

Equipe

<i>Director of photography</i>	Stéphane Fontaine
<i>Production designer</i>	Jean-Pierre Kohut-Svelko
<i>Sound recordist</i>	Amaury de Nexton
<i>Costume designer</i>	Dorothee Guiraud
<i>Sound mixer</i>	Benoît Biral
<i>Composer</i>	Philippe Sarde

Partenaires

Canal +, Centre Européen Cinématographique Rhône-Alpes, Centre National de la Cinématographie et de l'Image animée, TPS Star, TV5, Procirep, Angoa - Agicoa, Artémis Productions



Coproductions

France 3 Cinéma
Rhône-Alpes Cinéma

Ventes internationales

Pyramide International

Distribution

France: Pyramide Distribution