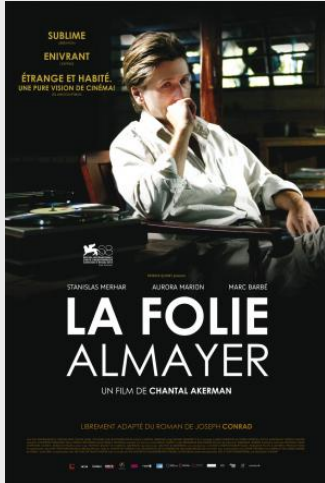


ALMAYER'S FOLLY

adapted from the novel by Joseph Conrad



Synopsis

The sun burns your eyes. A woman loses her mind. A girl sings in a honky tonk. A Chinese man on opium dreams. Running after a child through the jungle. Lightning. A marriage without love. A veil of sadness. Boundless joy. You will not have Nina. A young girl walks to the end of the night. Black sun. A father cries out his love. An outcast. An empty rowboat wobbles in the storm. Humid palm trees glisten. A dead man. Mosquitoes. A telluric film. A tragic story, like all Greek tragedies that never age. A tale as old as the world. A story as young as the world. Of love and folly. Of impossible...

Casting

<i>Almayer</i>	Stanislas Merhar
<i>Capitaine Lingard</i>	Marc Barbé
<i>Nina</i>	Aurora Marion
<i>Daïñ</i>	Zac Andrianasolo

Equipe

<i>Director of photography</i>	Rémon Fromont S.B.C.
<i>Sound recordist</i>	Pierre Mertens
<i>Composer</i>	Steve Dzialowski
<i>Picture editor</i>	Claire Atherton
<i>Production designer</i>	Patrick Deschene
<i>Production designer</i>	Alain-Pascal Housiaux
<i>Costume designer</i>	Catherine Marchand

Partenaires

Canal +, Centre du Cinéma et de l'Audiovisuel de la Fédération Wallonie-Bruxelles, Voo, Centre National de Cinéma et de l'image Animée - Nouvelles Technologies en production, Taxshelter.be, Tax Shelter du Gouvernement Fédéral de Belgique, CinéCinéma

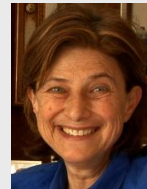
Drama

127 min – Couleur – 1,85 (Flat) – 5.1 - DCP

Français, English, Khmer

Released in Bénélux: 29/02/2012

Released in France: 25/01/2012



CHANTAL AKERMAN

Histoires d'Amérique LM (1988)

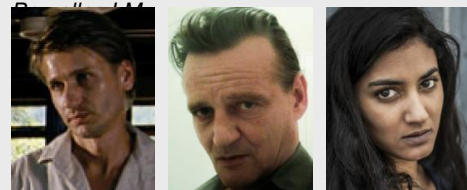
Nuit et jour LM (1991)

De l'autre côté LM (2001)

Demain, on déménage LM (2004)

Là-bas LM (2006)

Jeanne Dielman, 23 quai du Commerce, 1080



Productions (co)Déléguées

Artémis Productions

Paradise Films

Liaison Cinématographique

Coproductions

RTBF (Télévision belge)

Belgacom

Ventes internationales

Doc & Films International

Distribution

Bénélux: Cinéart

France: Shellac